

# Suttle and Company Real Estate

Property #84  
Tracts 1-42  
The Ridge at Frio River  
Leakey, Tx. Real County



Your Real Estate Professionals



## Attributes

- *Underground Utilities*
- *High-speed Internet*
- *Frio River Access*
- *Pavilion/Cooking Area*
- *B&B Allowed*

## Suttle and Company Real Estate

1260 Hwy 83 South  
P.O. Box 606  
Leakey, Tx. 78873

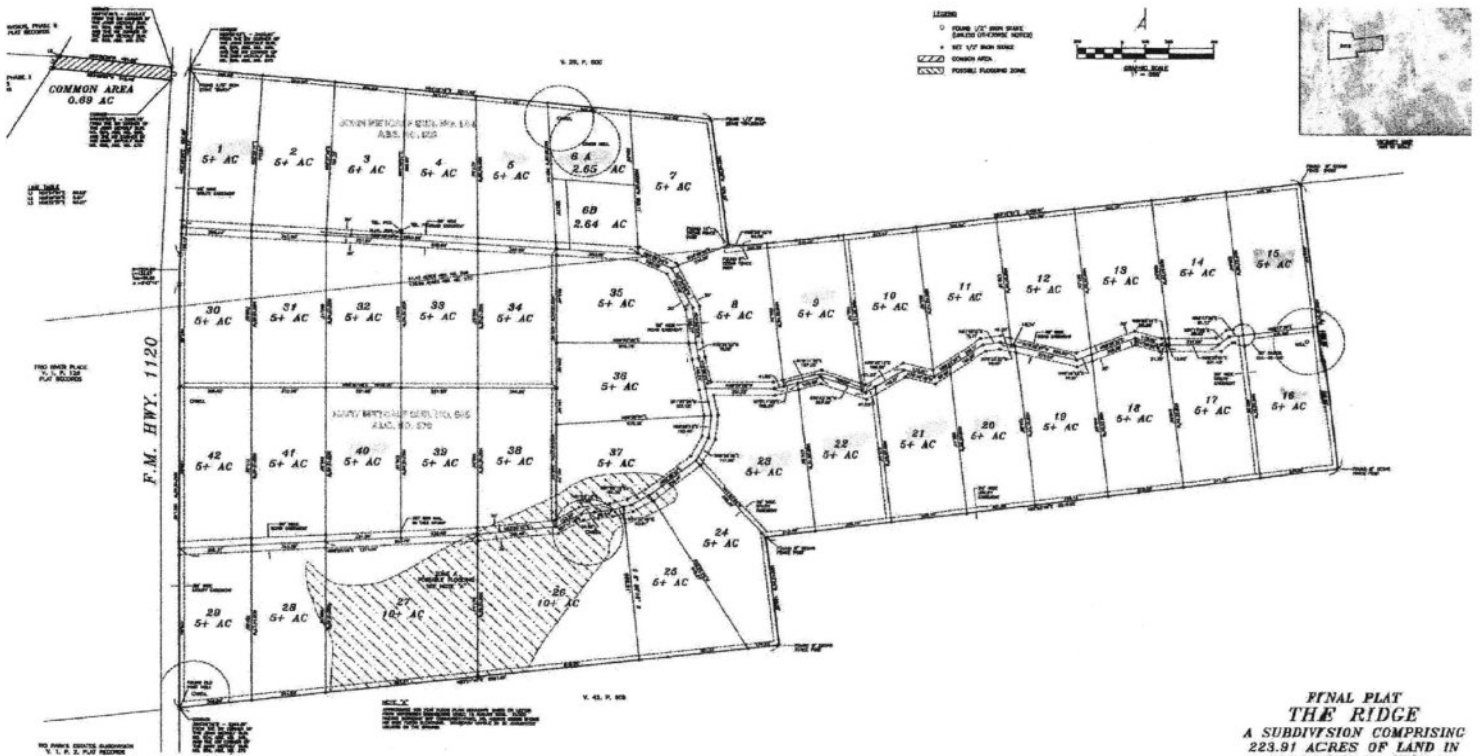
Phone: 830/232-5242  
Fax: 830/232-4283

Email: [suttlerealty@hctc.net](mailto:suttlerealty@hctc.net)  
[www.SuttleandCompany.com](http://www.SuttleandCompany.com)



*The Ridge contains 42 unique lots perfectly suited for home construction. Each five acre lot provides peaceful & pristine views of the Texas Hill Country. The Ridge is also home to many axis & whitetail deer along with other wildlife. The common river area is home to one of the best "swimming holes" on the Frio River. Huge cypress trees line the riverbanks of The Ridge at the pavilion & cooking area. The clear river, beautiful views, majestic hills, & ideal climate make The Ridge one of the best places to live in the Texas Hill Country. Properties with the exceptional characteristics of this property have historically maintained and increased in value over time.*

*Prices Start at \$109,500*



FINAL PLAT  
**THE RIDGE**  
 A SUBDIVISION COMPRISING  
 223.91 ACRES OF LAND IN  
 REAL COUNTY, TEXAS

| THE RIDGE SUBDIVISION-PRICING Updated 8-15-2022 |              |                 |            |
|---|--------------|-----------------|------------|
| Lot #   | Lot Size     | Price           | Status     |
| 1   | 5.00 Acres   | \$130,000.00    | SOLD       |
| 2   | 5.00 Acres   | \$100,500.00    | SOLD       |
| 3   | 5.00 Acres   | \$99,500.00     | SOLD       |
| 4   | 5.00 Acres   | \$99,500.00     | SOLD       |
| 5   | 5.00 Acres   | Prop#28/re-sell | SOLD       |
| 6   | 5.3/2.5Acres | Not Available   | SOLD       |
| 7   | 5.68 Acres   | \$159,500.00    | SOLD       |
| 8   | 5.32 Acres   | \$145,500.00    | SOLD       |
| 9   | 5.00 Acres   | \$132,500.00    | SOLD       |
| 10  | 5.00 Acres   | \$125,000.00    | SOLD       |
| 11  | 5.00 Acres   | \$125,000.00    | SOLD       |
| 12  | 5.00 Acres   | \$125,000.00    | SOLD       |
| 13  | 5.00 Acres   | \$125,000.00    | SOLD       |
| 14  | 5.00 Acres   | \$125,000.00    | SOLD       |
| 15  | 5.00 Acres   | \$115,000.00    | SOLD       |
| 16  | 5.01 Acres   | \$127,500.00    | SOLD       |
| 17  | 5.00 Acres   | \$130,000.00    | SOLD       |
| 18  | 5.04 Acres   | \$125,000.00    | SOLD       |
| 19  | 5.00 Acres   | \$135,000.00    | SOLD       |
| 20  | 5.00 Acres   | \$135,000.00    | SOLD       |
| 21  | 5.00 Acres   | \$112,500.00    | SOLD       |
| 22  | 5.00 Acres   | \$115,500.00    | SOLD       |
| 23  | 5.83 Acres   | \$157,410.00    | SOLD       |
| 24  | 5.23 Acres   | \$125,000.00    | SOLD       |
| 25  | 5.00 Acres   | \$130,000.00    | SOLD       |
| 26  | 10.06 Acres  | \$230,000.00    | SOLD       |
| 27  | 10.01 Acres  | \$230,000.00    | SOLD       |
| 28  | 5.00 Acres   | \$110,000.00    | SOLD       |
| 29  | 5.02 Acres   | \$125,000.00    | OFF MARKET |
| 30  | 5.01 Acres   | \$115,000.00    | SOLD       |
| 31  | 5.01 Acres   | \$109,500.00    | SOLD       |
| 32  | 5.01 Acres   | \$99,500.00     | SOLD       |
| 33  | 5.04 Acres   | \$109,500.00    | SOLD       |
| 34  | 5.00 Acres   | \$109,500.00    | SOLD       |
| 35  | 5.10 Acres   | \$109,500.00    | SOLD       |
| 36  | 5.11 Acres   | \$109,500.00    | SOLD       |
| 37  | 5.16 Acres   | \$99,500.00     | SOLD       |
| 38  | 5.02 Acres   | \$109,500.00    | SOLD       |
| 39  | 5.11 Acres   | \$109,500.00    | SOLD       |
| 40  | 5.07 Acres   |                 | SOLD       |
| 41  | 5.04 Acres   | \$109,500.00    | SOLD       |
| 42  | 5.04 Acres   | \$125,000.00    | SOLD       |

