

Suttle and Company Real Estate

Property #58
5.16 Acres
Spring Hill Subdivision
Leakey, Tx. Real County



Your Real Estate Professionals



Attributes

- Close to Leakey
- City Water
- Views & More Views
- Gated Community
- Underground Utilities

Suttle and Company Real Estate

1260 Hwy 83 South
P.O. Box 606
Leakey, Tx. 78873

Phone: 830/232-5242
Fax: 830/232-4283

Email: suttlerealty@hctc.net
www.SuttleandCompany.com



Prop#58/Spring Hill Subdivision offers this 5.16 acre tract #10 featuring gorgeous hill country views, city water, & underground utilities. This gated community is located just west of Leakey off of Hwy 337 with paved road access, quality restrictions & very friendly neighbors. The elevated terrain places your newly built custom home viewing south/southeast straight down the Frio Canyon valley. List Price \$84,900

T. W. N. G. RY. CO.

Sur. 19

Sur. 22

643.51 Acres
Luix N. Pena & Irene T. Pena Irrevocable Trust
to
Brent H. Hunter, Trustee
May 3, 2000
Vol. 52, Pg. 489, R.P.R.

T. W. N. G.
RY. CO.

abst. 894

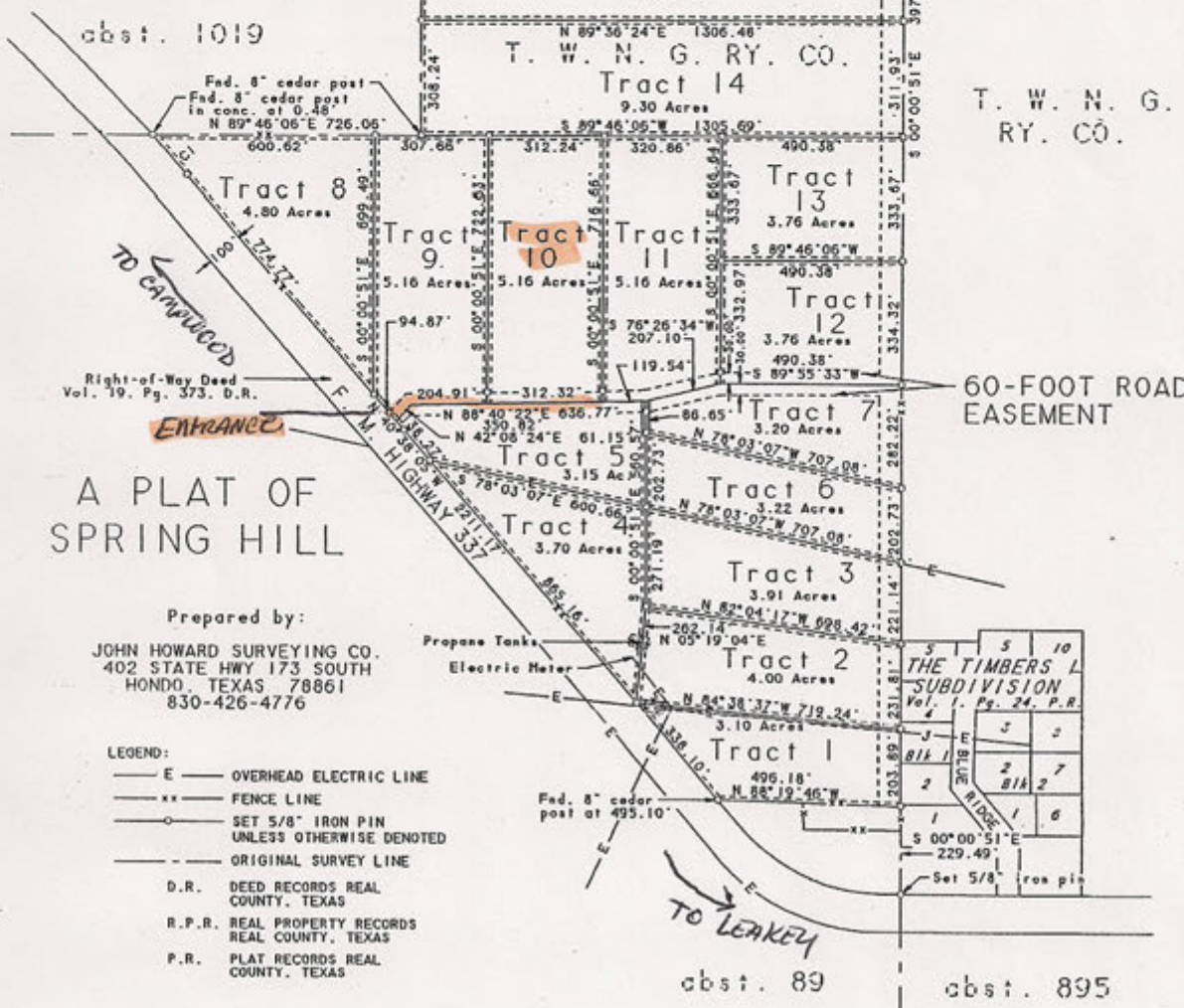
abst. 788



T. W. N. G.
RY. CO.

Scale 1" = 300'

BEARINGS SHOWN HEREON
ARE GEODETIC FROM GPS
OBSERVATIONS.



60-FOOT ROAD
EASEMENT

Parcel 1
314.16 Acres
Paul L. Bushong, et ux
to
Bushong Children's Trust
February 5, 1988
Vol. 82, Pg. 466, D.R.

T. W. N. G.
RY. CO.

60-FOOT ROAD
EASEMENT

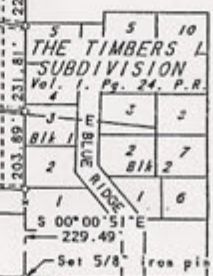
A PLAT OF SPRING HILL

Prepared by:

JOHN HOWARD SURVEYING CO.
402 STATE HWY 173 SOUTH
HONDO, TEXAS 78861
830-426-4776

LEGEND:

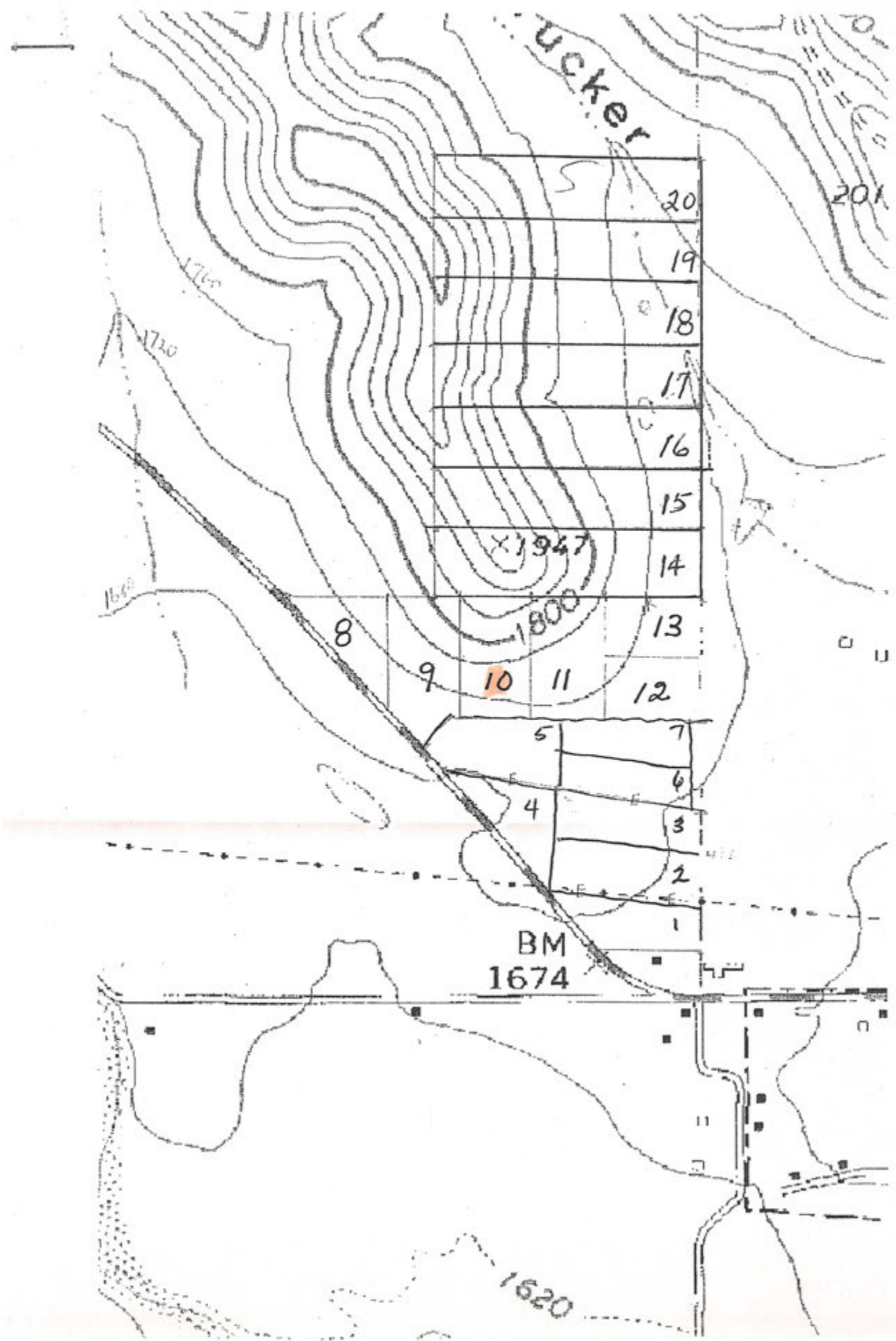
- E — OVERHEAD ELECTRIC LINE
- xx — FENCE LINE
- o — SET 5/8" IRON PIN
UNLESS OTHERWISE DENOTED
- - - - ORIGINAL SURVEY LINE
- D.R. DEED RECORDS REAL
COUNTY, TEXAS
- R.P.R. REAL PROPERTY RECORDS
REAL COUNTY, TEXAS
- P.R. PLAT RECORDS REAL
COUNTY, TEXAS



TO LEAKNEY

abst. 89

abst. 895





20

19

18

17

16

15

14

8

9

10

11

13

12

5

7

6

4

3

2

1

