

Tierra Linda

Phase 1



Scan with Smartphone for more info.
Free App with SmartSavvy Barcode!



Residential tracts adjacent to
ConCan Country Club & Golf Course

- Quality Restrictions
- Adjacent to 18 hole Championship Golf Course
- One-of-a-kind destination course
- An hour and a half from San Antonio
- Gorgeous Frio Valley Views along the Frio River

Prop#77/ Tierra Linda Phase I features more of ConCan's beautiful Frio Canyon residential tracts. Nice, level terrain with open views of the nearby mountains & just minutes from the Frio River, House Pasture Cattle Co. & Music Venue and just next door to the prestigious Championship Golf Course. Quality restrictions also allow owners to place their vacation homes in a rental pool. Paved road access, water system and great prices makes a wonderful opportunity to own in the popular Frio Canyon at Tierra Linda.

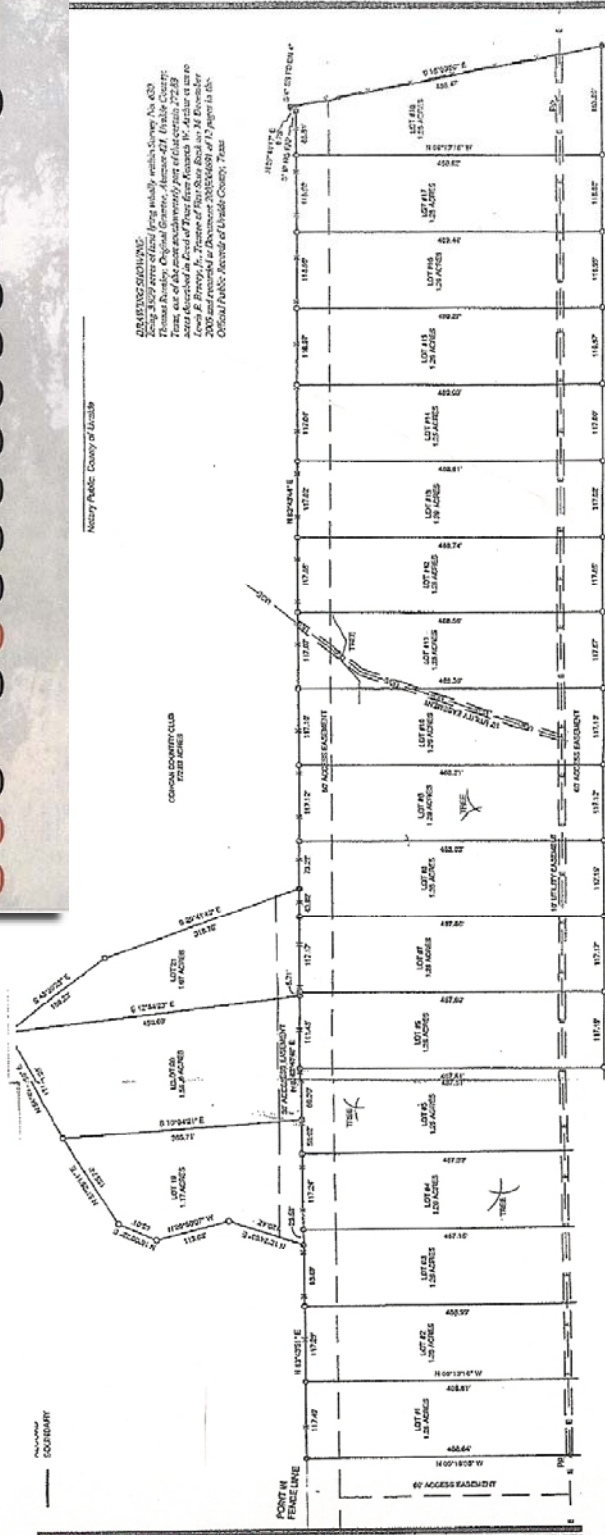
Offered By:

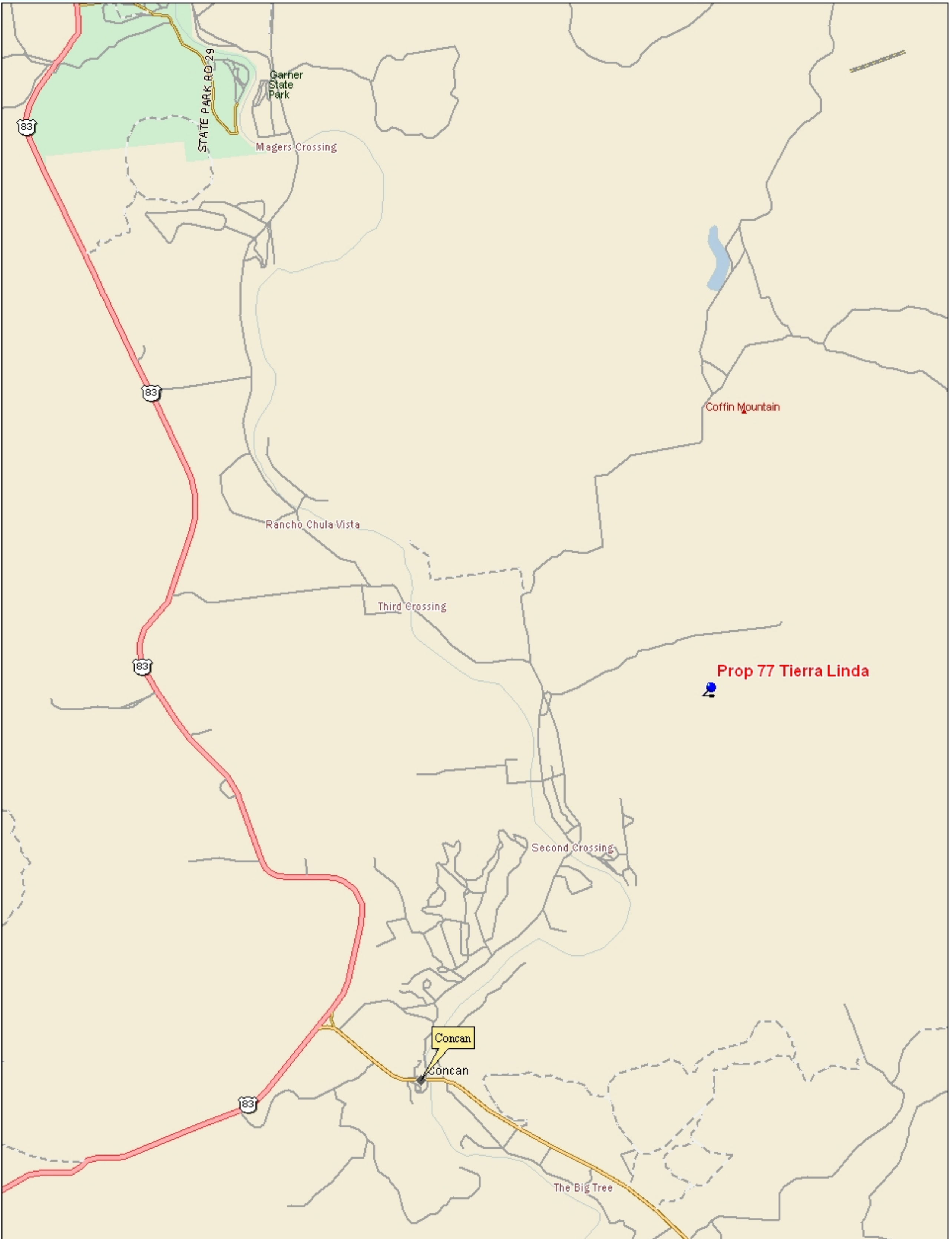
Suttle and Company Real Estate
1260 S US Hwy 83, P.O. Box 606*Leakey, Tx. 78873
Ph: 830-232-5242 Fx: 830-232-4283

www.SuttleandCompany.com



1. \$75,500
2. \$76,500
3. \$78,500
4. \$88,500
5. \$117,500
6. \$96,500
7. \$96,500
8. \$88,500
9. \$125,500
10. \$125,500
11. \$125,500
12. \$125,500
13. \$115,500
14. \$115,500
15. \$115,500
16. \$115,500
17. \$125,500
18. \$88,500
19. \$136,500
20. \$148,500
21. \$136,500

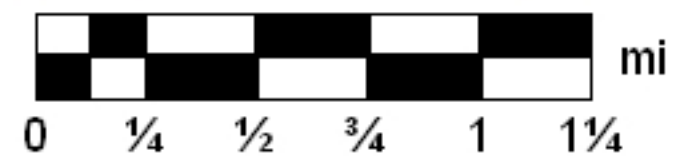




Data use subject to license.

© DeLorme. DeLorme Street Atlas USA® 2010.

www.delorme.com



Data Zoom 12-0